



Coordinate System: GCS WGS 1984  
Datum: WGS 1984  
Units: Degree

San Antonio  
**Vicinity Map**  
1 in = 128 miles

**Legend**

-  Buckeye Texas HUB
-  Ship Channel Limits

0 500 1,000 2,000  
Feet

**Figure 1**  
**Vicinity and Project Area Map**

USACE Permit Modification  
SWG-2008-00904  
Buckeye Texas HUB Docks  
Nueces County, TX

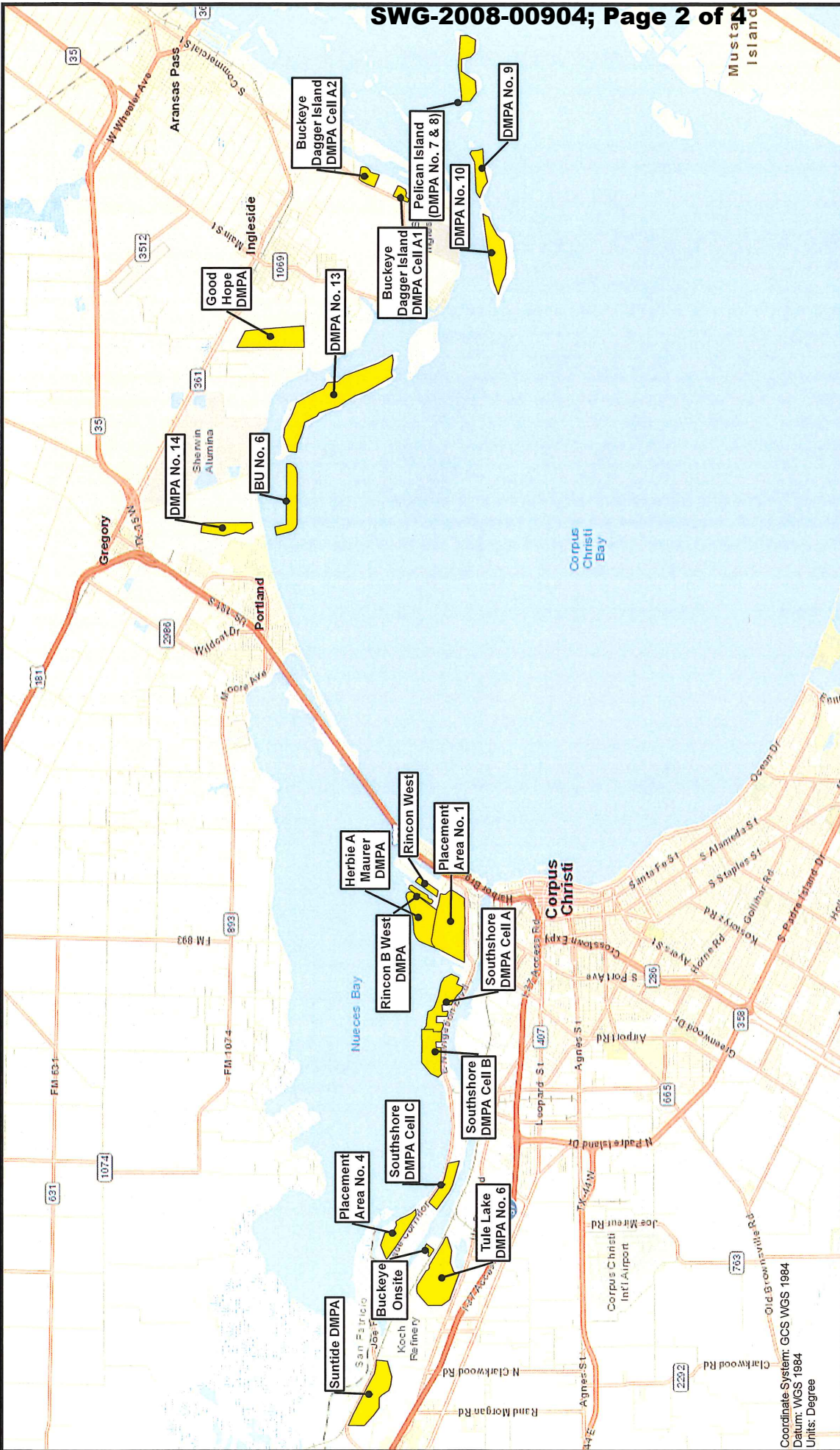
Date: Feb 05, 2020

Prepared By: C. Gerken

Project: Buckeye Texas HUB

1 inch = 1,000 feet



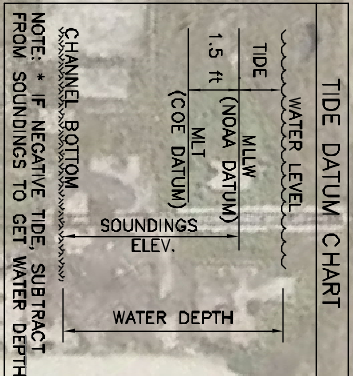


**Figure 2: Maintenance Dredge Material Placement Areas**  
 USACE Permit Modification  
 SWG-2008-00904  
 Buckeye Texas HUB Docks  
 Nueces County, TX

Date: Feb 05, 2020  
 Prepared By: C. Gerken  
 Project: Buckeye Texas HUB  
 1 inch = 14,500 feet



Coordinate System: GCS WGS 1984  
 Datum: WGS 1984  
 Units: Degree

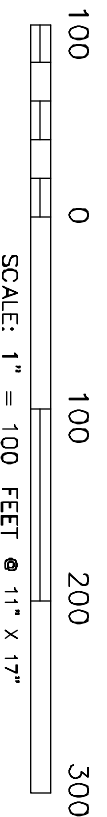


- NOTES
- 1) SOUNDINGS WERE MEASURED BY NAISMITH MARINE SERVICES ON MARCH 10-11, 2020. SEA FLOOR CONDITIONS ARE SUBJECT TO CHANGE.
  - 2) HORIZONTAL DATUM: NAD83, STATE PLANE, SOUTH TEXAS ZONE, US FEET
  - 3) VERTICAL DATUM: MEAN LOWER LOW WATER

REFERENCE MONUMENTS:

"NIKOLAUS"  
N: 17,188,397.50  
E: 1,322,390.47  
ELEV: 8.1' MLW

"KRAMS"  
N: 17,191,722.00  
E: 1,310,310.8  
ELEV: 11.5' MLW



NO.	DATE	REVISION

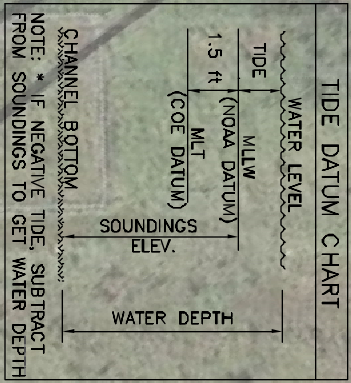
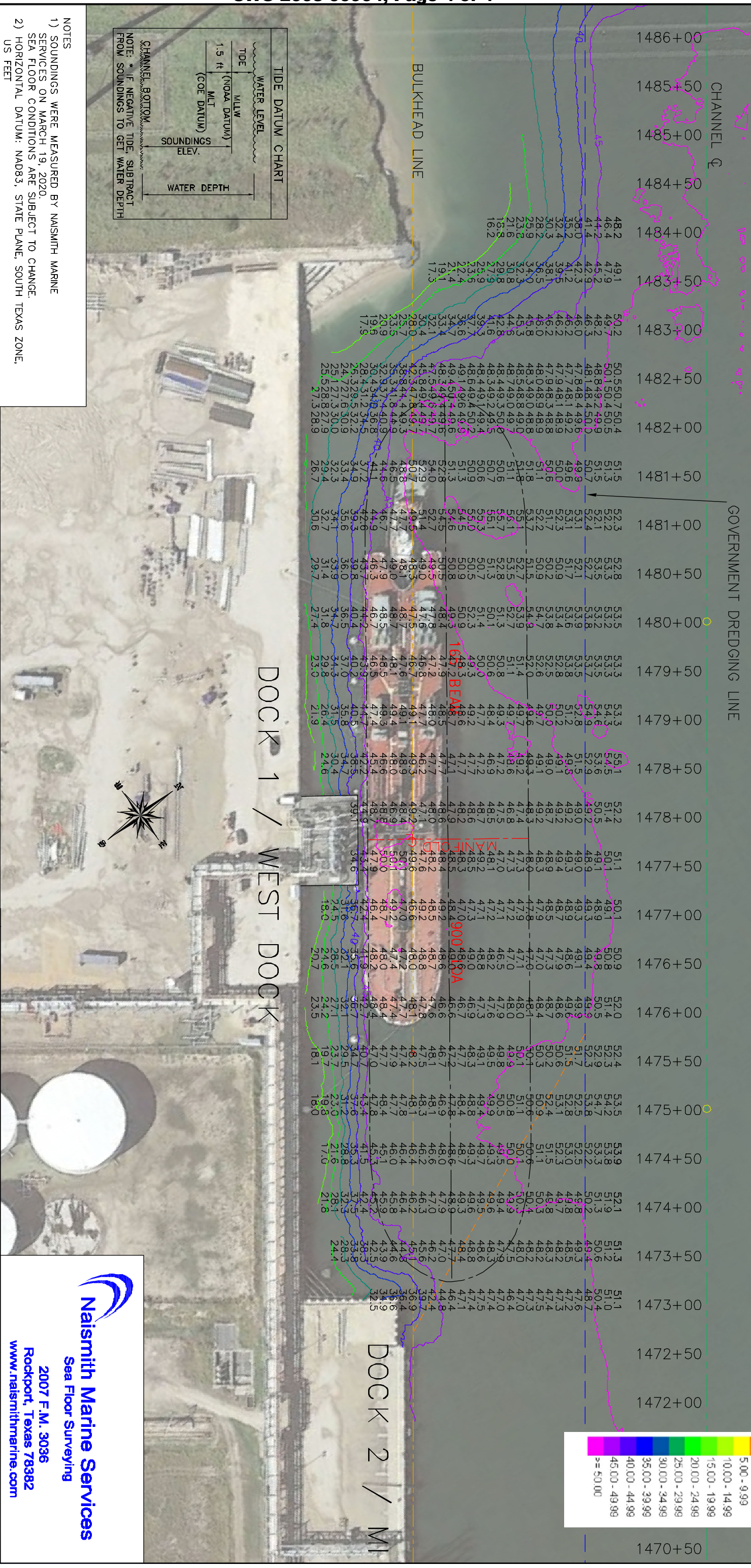


BUCKEYE PARTNERS, LP

**Naismith Marine Services**  
Sea Floor Surveying  
2007 F.M. 3036  
Rockport, Texas 78382  
www.naismithmarine.com

BUCKEYE PARTNERS, LP  
DOCKS 2, 3 & 4  
BATHYMETRIC SURVEY  
PORT OF CORPUS CHRISTI, TEXAS  
SCALE: 1" = 100'  
DWN. BY: BSG  
SHEET 1 OF 1  
DATE: MAR. 2020

FEET, MLLW

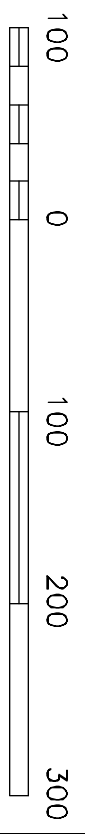


- NOTES
- 1) SOUNDINGS WERE MEASURED BY NAISMITH MARINE SERVICES ON MARCH 19, 2020. SEA FLOOR CONDITIONS ARE SUBJECT TO CHANGE.
  - 2) HORIZONTAL DATUM: NAD83, STATE PLANE, SOUTH TEXAS ZONE, US FEET
  - 3) VERTICAL DATUM: MEAN LOWER LOW WATER

"NIKOLAUS"  
 N: 17,188,397.50  
 E: 1,322,390.47  
 ELEV: 8.1' MLLW

"KRAMS"  
 N: 17,191,722.00  
 E: 1,310,310.8  
 ELEV: 11.5' MLLW

REFERENCE MONUMENTS:



NO.	DATE	REVISION



BUCKEYE PARTNERS, L.P.

**Naismith Marine Services**  
 Sea Floor Surveying  
 2007 F.M. 3036  
 Rockport, Texas 78382  
[www.naismithmarine.com](http://www.naismithmarine.com)

BUCKEYE PARTNERS, LP

DOCK 1

BATHYMETRIC SURVEY

PORT OF CORPUS CHRISTI, TEXAS

SCALE: 1" = 100'  
 DWN. BY: BSG

SHEET 1 OF 1

DATE: MAR. 2020